



Project RISE WAVI Phases

Phase I: PURCHASE ADMIN. BLDG./RENOVATIONS/SECURITY

Total Phase I: **\$505,198**

Status: **Completed**

The purchase of a new administration building enabled our senior leadership team to move across the alley to 816 6th St, creating a new space for training and space for shelter expansion.

Description Expense	Cost	Breakdown/Funding
1. Purchase admin bldg, 816 6th Street *Building was financed with a bank	\$425,000	SD Network Lease = 52% WAVI Funds = 48
2. Renovations, part 1 *Includes: floor replacement/painting/misc building setup	\$22,516	WAVI Funds = 100%
3. Renovations, part 2 *Includes: windows & fenced yard for security (to be done 2022)	\$50,250	CDBG grant = 100%
4. Security *Includes: locks/cameras	\$7,432	WAVI funds = 100%

Phase II: STAFF RETENTION/ATTRACTION/WELLNESS

Total Phase II: **\$360,622**

Status: **Completed**

WAVI has strategically sought ways to attract and retain staff. Our staff work diligently with individuals and families in critical situations and work every day to empower choices to break the chains of violence and create healthy relationships. This phase included a living wage study, wage increases to provide all staff with a living wage, a wellness program, and increased onboarding and monthly trainings to ensure WAVI staff have the tools they need to provide best practice services.

Description Expense	Cost	Breakdown/Funding
1. Staff/wage increase *Includes: bringing wages to livable /employee attraction and additional staff added (prior year compared to current year)	\$359,477	Private Donors = 84% Gwendolyn Stearns = 1% Larson Foundation= 8% State Funds= 5% WAVi Funds = 2%
2. Wellness room for staff	\$1,145	WAVI funds = 100%

Phase III: SHELTER EXPANSION

Total Phase III: **\$400,000**

Status: **Projected Completion Date: January 31, 2023**

We are expanding our shelter to provide additional beds and resources to meet the needs of the individuals and families we serve.

Description Expense	Cost	Breakdown/Funding
1. Chamberlin Architects *Includes: Design/Bidding/Manage Construction Phases	\$25,900	WAVI funds = 100%
2. Construction *Includes: remodeling includes material and labor	\$284,000	JTV Foundation = 26% Private Donors = 74%
3. Security System	\$5,000	BH Area Community Grant = 60% JTV Foundation = 40%

4. Equipment - beds for single rooms *Includes installation fee	\$20,000	BH Area Community Grant = 35% JTV Foundation = 50% Private Donors = 15%
5. Misc office furniture, phones	\$30,100	Private Donors = 100%
6. Administrative compensation (WAVI staff)	\$30,000	BH Area Community Grant = 33% JTV Foundation = 43% Private Donors = 24%
7. Promotional, fundraising, advertising, and marketing expenses	\$5,000	WAVI Funds = 100%

How You Can Help!

WAVI has multiple ways to donate.

1. Donors can mail in a check to:

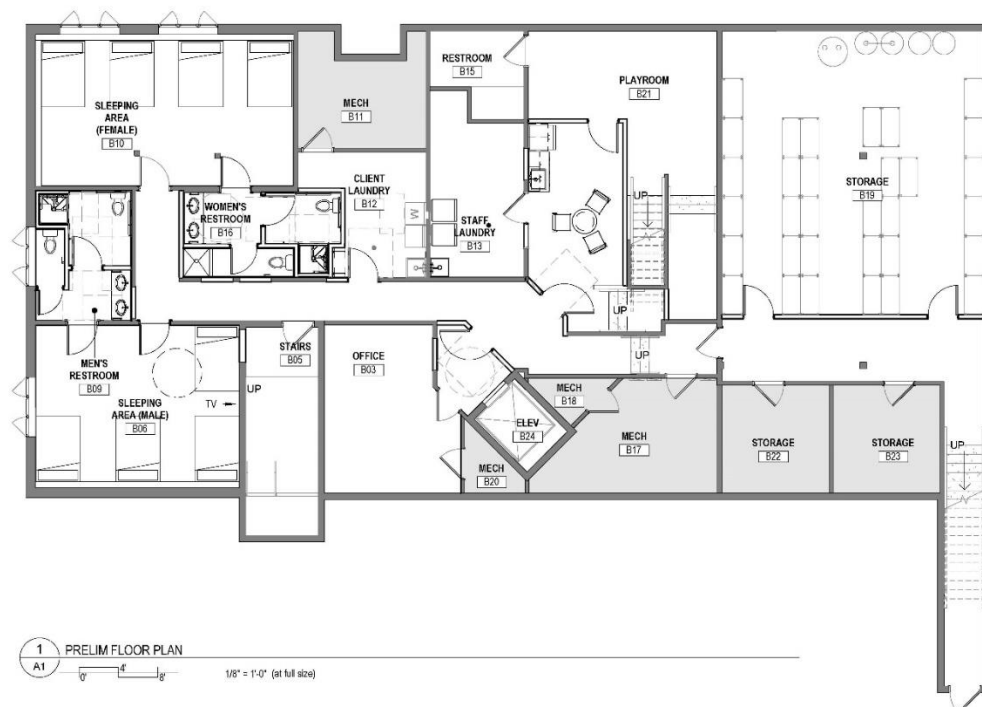
Working Against Violence, Inc.
527 Quincy St.
Rapid City, SD 57701

2. Donors can drop off financial contributions at 527 Quincy St.
3. Donors can make a credit card donation on our website www.wavi.org.
4. Many employers and companies also sponsor matching gift programs for their employees.
*Your tax-deductible gift to WAVI could be doubled or even tripled! If your company participates in matching gift programs, request the appropriate form, complete it, and mail in with a donation.

All donations are Tax Exempt and considered charitable donations.

Please call WAVI 605 341-3292 with questions or for more information

Thank you for helping provide safe shelter and resources to survivors of domestic and sexual violence, stalking, and human trafficking by making a financial contribution to complete our final phase of Project WAVI RISE.



1 PRELIM FLOOR PLAN
A1 1/8" = 1'-0" (at full size)